

EAM580R-SY - Analog

Solid shaft with synchro flange

Magnetic single- or multiturn encoders

Overview

- Encoder single- or multiturn / Analog
- E1 compliant design
- High protection up to IP 67
- High resistance to shock and vibrations
- Protection against corrosion CX (C5-M)
- Wire cross section 0.5 mm²
- Teach input for adjustment of measuring range
- Applicable up to PLd (ISO 13849)



Technical data

Technical data - electrical ratings

| | |
|-------------------------------|--|
| Voltage supply | 8...30 VDC 14...30 VDC |
| Reverse polarity protection | Yes |
| Consumption typ. | 20 mA (24 VDC, w/o load) |
| Initializing time | ≤ 170 ms after power on |
| Response time | < 1 ms |
| Interface | Analog 0...10 V / 0.5...4.5 V / 4...20 mA / Resolution: 12 bit |
| Function | Multiturn Singleturn |
| Teach range | 5° ...359.9° (singleturn) 5° ...32767 turns (multiturn) |
| Absolute accuracy | ±0.15 ° (+20 ±15 °C) ±0.25 ° (-40...+85 °C) sensor |
| Accuracy analog output | ±0.5 % of whole measuring range (-40...+85 °C) |
| Sensing method | Magnetic |
| Interference immunity | EN 61000-6-2 ISO 11452-2:2004* / -5:2002* ISO 7637-2:2004* ISO 10605:2008 + Amd 1:2014 (CD ±8 kV / AD ±15 kV) * Severity level according to ECE R10 (Rev. 4) |
| Emitted interference | EN 61000-6-4 CISPR 25:2008 (30...1000 MHz) ISO 7637-2:2004* * Severity level according to ECE R10 (Rev. 4) |
| MTTF _d (ISO 13849) | High (>100 years) Use in safety functions exclusively based on Application Note and MTTF _d reliability prediction (request separately). |

Technical data - electrical ratings

| | |
|-------------------------|--|
| Programmable parameters | Measuring range teachable |
| Diagnostic function | DATAVALID |
| Factory setting | 360° and 10 revolutions (other on request) |
| Approval | UL approval / E217823 |

Technical data - mechanical design

| | |
|-----------------------|--|
| Size (flange) | ø58 mm |
| Shaft type | ø6 x 10 mm, solid shaft with flat |
| Flange | Synchro flange |
| Protection EN 60529 | IP 67 (with shaft seal) |
| Operating speed | ≤6000 rpm |
| Starting torque | ≤2.5 Ncm (+20 °C, IP 67) |
| Moment of inertia | 15.38 gcm ² |
| Admitted shaft load | ≤40 N axial ≤80 N radial |
| Material | Housing: steel, powder-coated Flange: aluminium Shaft: stainless steel |
| Corrosion protection | IEC 60068-2-52 Salt mist for ambient conditions CX (C5-M) accord- ing to ISO 12944-2 |
| Operating temperature | -40...+85 °C (see general information) |
| Relative humidity | 95 % |
| Resistance | EN 60068-2-6 Vibration 30 g, 10-2000 Hz EN 60068-2-27 Shock 500 g, 1 ms |
| Weight approx. | 250 g |
| Connection | Flange connector M12, 5-pin Cable 2 m |

EAM580R-SY - Analog

Solid shaft with synchro flange

Magnetic single- or multiturn encoders

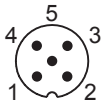
General information

Self-heating interrelated to speed, protection, attachment method and ambient conditions as well electronics and supply voltage must be considered for precise thermal dimensioning. Self-heating is supposed to approximate 8 K (IP 67 protection) per 1000 rpm. Operating the encoder close to the maximum limits requires measuring the real prevailing temperature at the encoder flange. For the current output (version C4), a load $>470\ \Omega$ must be selected when supplied with 24 VDC in order to minimize the self-heating of the encoder and not to exceed the maximum operating temperature. For cable lengths $>2\text{ m}$, a current output (version C4) is to be preferred due to the voltage drop in order to avoid effects on the accuracy.

Terminal assignment

Flange connector M12, 5-pin

| Pin | Signals | Description |
|-----|-----------|------------------|
| 1 | 0 V | Supply voltage |
| 2 | +Vs | Supply voltage |
| 3 | Uout/Iout | Analog output |
| 4 | DV | DATAVALID output |
| 5 | Teach | Teach input |



Cable

| Core color | Signals | Description |
|------------|-----------|------------------|
| white | 0 V | Supply voltage |
| brown | +Vs | Supply voltage |
| green | Uout/Iout | Analog output |
| yellow | DV | DATAVALID output |
| grey | Teach | Teach input |

Cable data: $5 \times 0.5\text{ mm}^2$

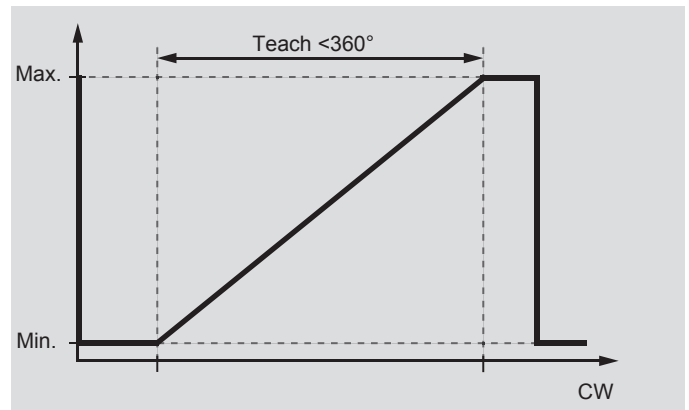
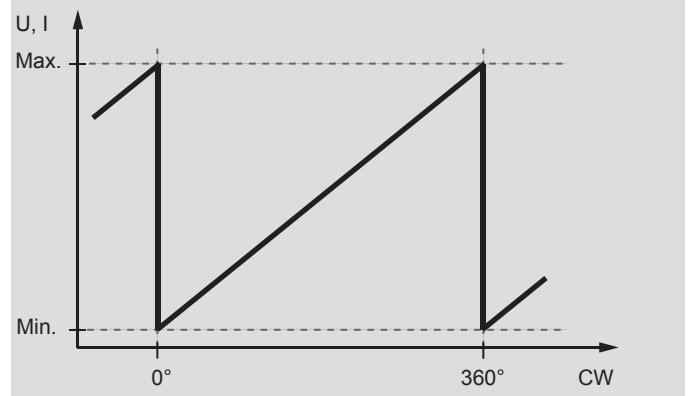
Terminal significance

| | |
|-------|--|
| Iout | Current output Load: $<500\ \Omega$ |
| Uout | Voltage output Current output: max. 10 mA Load resistor: $>1\text{ k}\Omega$ between Uout / 0 V (version 0...10 V) $>2\text{ k}\Omega$ (version 0.5...4.5 V) |
| Teach | Teach in Maximum 0...+Vs Level LOW: $<1\text{ V}$ Level HIGH: $>2.1\text{ V}$ |
| DV | Diagnostic output/Teach output Function normal operation: DATAVALID (Diagnostic output) Type NPN output, Pull-Up $10\text{ k}\Omega$ integrated - No error: HIGH - Error: LOW Function teach process: Teach status |

Output signals

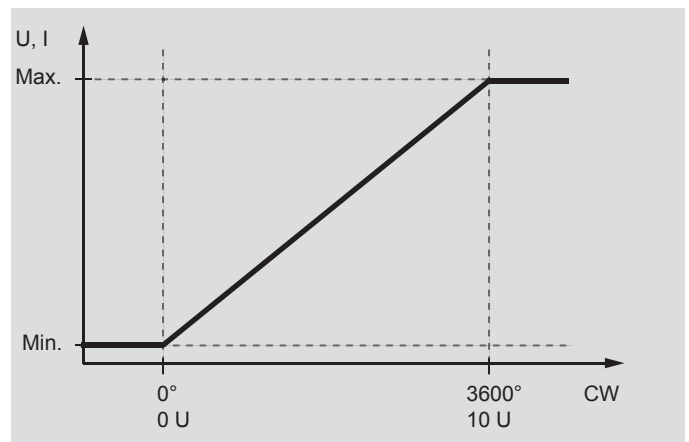
Singleturn

Default: CW, 360° , rotating direction and measuring range teachable.



Multiturn

Default: CW, 10 turns, rotating direction and measuring range teachable (max. 32767 turns).



Note: The encoder can be mounted at a specific position and set to position 1 by means of factory preset.

EAM580R-SY - Analog

Solid shaft with synchro flange

Magnetic single- or multiturn encoders

Teach process

Activate teach process

Start teach process within 5 minutes after power on. Set teach input for >5 seconds on HIGH and afterwards on LOW level.
DV/Status output: Oscillates after 5 seconds.

Position 1

Get encoder on position intended for min. voltage output / current output.
Set teach input for >0.1 seconds on HIGH.
DV/Status output: Switches to HIGH level for 3 seconds and flashes shortly.

Position 2

Get encoder on position intended for max. voltage output / current output.
Set teach input for >0.1 seconds on HIGH.
DV/Status output: Switches to HIGH level for 3 seconds and flashes shortly. If measuring range is exceeded or the limits are too close to each other, the teaching process was not successful and has to be repeated.

Default

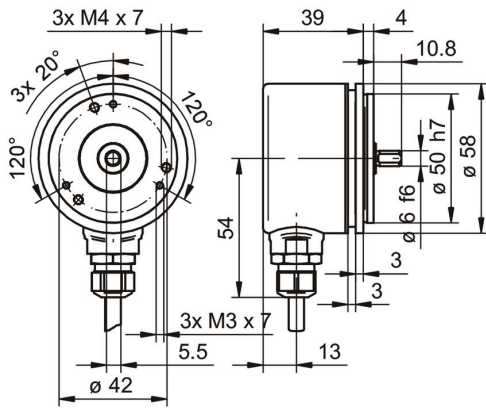
Set teach input for >15 seconds on HIGH.
DV/Status output: Oscillates after 5 seconds.

EAM580R-SY - Analog

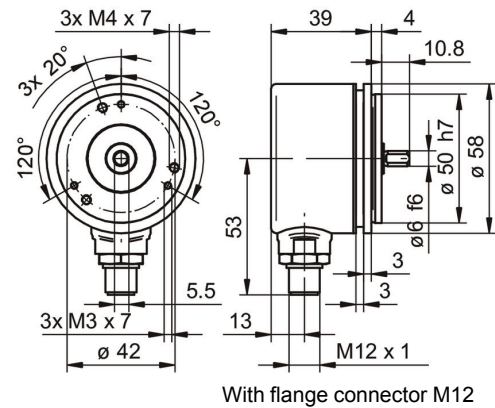
Solid shaft with synchro flange

Magnetic single- or multiturn encoders

Dimensions



With cable



With flange connector M12

EAM580R-SY - Analog

Solid shaft with synchro flange

Magnetic single- or multiturn encoders

Ordering reference

| | | | | | | | | | | | | | | |
|---|---------|---|---|---|---|---|---|---|----|---|------|------|---|---|
| | EAM580R | - | S | Y | 6 | . | 7 | # | ## | . | #### | 1 | . | A |
| Product | EAM580R | | | | | | | | | | | | | |
| Shaft type | | | | | | | | | | | | | | |
| Solid shaft | | | S | | | | | | | | | | | |
| Flange (shaft) | | | | | | | | | | | | | | |
| Synchro flange, centering collar ø50 x 4 mm, flute ø53 mm, pitch circle diameter ø42 - 3xM3/3xM4 | | | | Y | | | | | | | | | | |
| Shaft | | | | | | | | | | | | | | |
| ø6 x 10 mm, with flat | | | | | 6 | | | | | | | | | |
| Protection class | | | | | | | | | | | | | | |
| IP 67 | | | | | | | 7 | | | | | | | |
| Connection | | | | | | | | | | | | | | |
| Cable radial, 2 m | | | | | | | | L | | | | | | |
| Flange socket radial, M12, 5-pin, male contacts, A-coded | | | | | | | | N | | | | | | |
| Voltage supply / interface | | | | | | | | | | | | | | |
| 14...30 VDC, current output 4...20 mA | | | | | | | | | C4 | | | | | |
| 14...30 VDC, voltage output 0...+10 V | | | | | | | | | V1 | | | | | |
| 8...30 VDC, voltage output 0.5...+4.5 V | | | | | | | | | V3 | | | | | |
| Measuring range | | | | | | | | | | | | | | |
| 0...360° | | | | | | | | | | | | A360 | | |
| 0...3600° | | | | | | | | | | | | A36A | | |
| Output characteristics | | | | | | | | | | | | | | |
| One-channel, rising CW | | | | | | | | | | | | | 1 | |
| Operating temperature | | | | | | | | | | | | | | |
| -40...+85 °C | | | | | | | | | | | | | | |

Accessories

Mounting accessories

| | |
|----------|---|
| 11050507 | Bellows coupling (D1=06 / D2=10) |
| 11065922 | Coupling CPS25 (L=19, D1=10 / D2=06) |
| 11065916 | Coupling CPS25 (L=19, D1=06 / D2=06) |
| 10141132 | Spring washer coupling (D1=6 / D2=10) |
| 10141131 | Spring washer coupling (D1=6 / D2=6) |
| 11069333 | Coupling CPS37 (L=24, D1=06 / D2=06) |
| 11069337 | Coupling CPS37 (L=24, D1=10 / D2=06) |
| 10117667 | Mounting adaptor |
| 10117668 | Set of eccentric fixings for mounting clamp (10117667) |